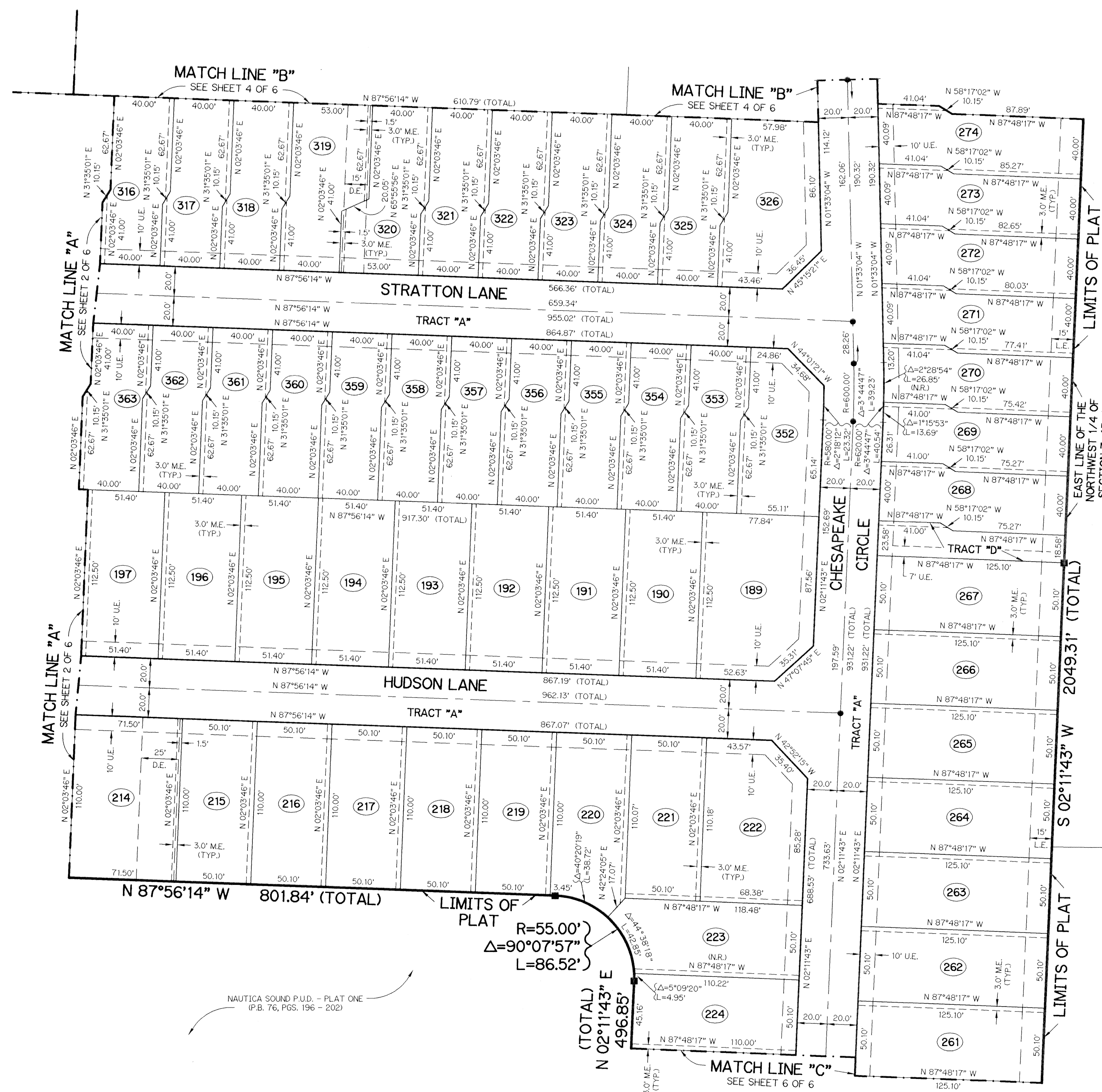
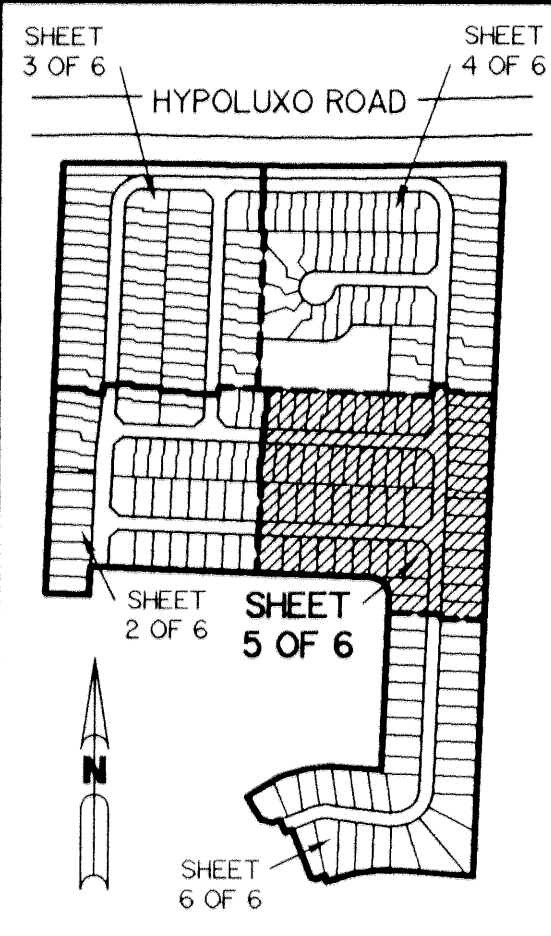


NAUTICA SOUND P.U.D. - PLAT TWO

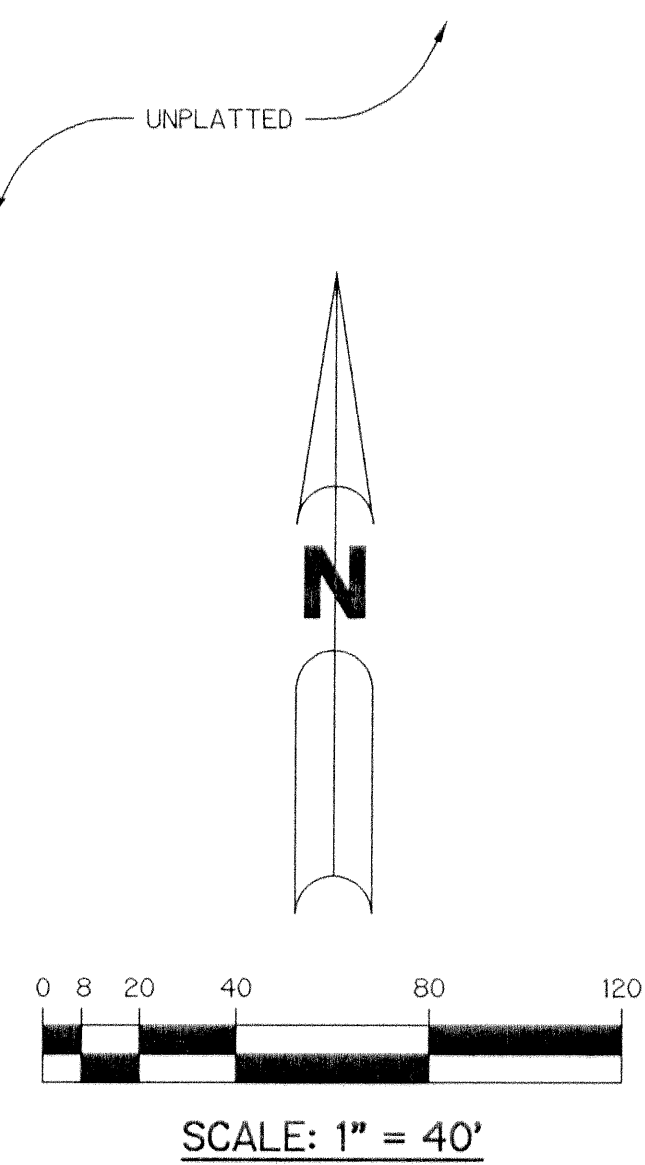
A PARCEL OF LAND LYING IN SECTION 7,
TOWNSHIP 45 SOUTH, RANGE 43 EAST, CITY OF BOYNTON BEACH,
PALM BEACH COUNTY, FLORIDA.

SHEET 5 OF 6 JANUARY, 1996

A PLANNED UNIT DEVELOPMENT



- LEGEND:**
- - PERMANENT REFERENCE MONUMENT, PLS #4190
 - - FOUND PERMANENT REFERENCE MONUMENT, PLS #4190
 - - PERMANENT CONTROL POINT, PLS #4190
 - △ - DELTA ANGLE
 - ⊕ - CENTERLINE
 - D.E. - DRAINAGE EASEMENT
 - F.P.L.E. - FLORIDA POWER & LIGHT EASEMENT
 - L - ARC LENGTH
 - L.A.E. - LIMITED ACCESS EASEMENT
 - L.E. - LANDSCAPE EASEMENT
 - L.M.A.E. - LAKE MAINTENANCE ACCESS EASEMENT
 - L.M.E. - LAKE MAINTENANCE EASEMENT
 - L.W.D.D. - LAKE WORTH DRAINAGE DISTRICT
 - M.E. - DRAINAGE, MAINTENANCE AND OVERHANG EASEMENT
 - N.R. - NOT RADIAL
 - N.T.S. - NOT TO SCALE
 - O.R.B. - OFFICIAL RECORD BOOK
 - P.B. - PLAT BOOK
 - P.G.S. - PAGES
 - PLS - PROFESSIONAL LAND SURVEYOR
 - P.S.M. - PROFESSIONAL SURVEYOR AND MAPPER
 - R - RADIUS
 - R/W - RIGHT-OF-WAY
 - S.T. - SURVEY TIE
 - U.E. - UTILITY EASEMENT



THIS INSTRUMENT PREPARED BY
WILBUR F. DIVINE, P.S.M. 4190, STATE OF FLORIDA
LAWSON, NOBLE AND WEBB, INC.
ENGINEERS PLANNERS SURVEYORS
WEST PALM BEACH, FLORIDA

CLUB MEADOWS,
PHASE - III
(P.B. 55, PG. 111)